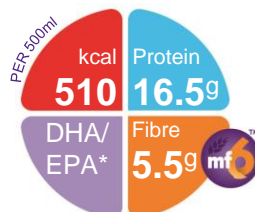


Tentrini Multi Fibre

A ready-to-use, nutritionally complete, fibre enriched, enteral tube feed for children aged 7-12 years (or 21-45kg).

Features

- Aged adapted nutrition, designed specifically to meet the nutritional needs of older children
- Whey protein enriched and dominant for improved tolerance and protein balance
- DHA* and EPA* enriched to provide a source of long chain polyunsaturated fatty acids to enterally fed children
- Fibre enriched, MF6™ fibre blend**, 5.5g per bottle, to help maintain normal bowel function
- Enriched with carotenoids reflecting general health recommendations for its antioxidant properties and positive effect on immune function



Indications

For the dietary management of:

- Disease related malnutrition in children 7-12 years (or 21-45kg) with constipation or diarrhoea

Important Notice

- Not suitable for patients with galactosaemia
- Not suitable for infants under 1 year of age
- Use with caution in children with a seafood allergy
- Not suitable for children requiring a fibre free diet
- Not for parenteral use

Directions for Use

- Use at room temperature
- Shake well before use
- Handle aseptically to ensure product remains sterile
- Usage to be determined by a healthcare professional

Storage

- Store in a cool, dry place
- Once opened, store in the refrigerator
- Discard unused content after 24 hours

Ordering Information

- Contact Nutricia Customer Care: ordersau@nutricia.com

Tentrini Multi Fibre	Code	Units per carton
500ml OpTri Bottle	132013	12

Ingredients

Water, maltodextrin, vegetable oils (canola oil, sunflower oil), whey protein concentrate (from **milk**), dietary fibres (**soy** polysaccharides, resistant starch, inulin, arabic gum, cellulose, oligofructose), sodium caseinate (from **milk**), emulsifier (**soy** lecithin), acidity regulator (citric acid), di potassium hydrogen phosphate, **fish** oil, sodium chloride, tri calcium phosphate, tri potassium citrate, choline chloride, carotenoids (contains **soy**) (β-carotene, lutein, lycopene), potassium chloride, calcium hydroxide, magnesium hydroxide, sodium L-ascorbate, tri sodium citrate, potassium hydroxide, taurine, ferrous lactate, L-carnitine, zinc sulphate, nicotinamide, retinyl acetate, DL-α-tocopheryl acetate, sodium selenite, copper gluconate, manganese sulphate, calcium D-pantothenate, chromium chloride, D-biotin, cholecalciferol, thiamin hydrochloride, pyridoxine hydrochloride, pteroylmonoglutamic acid riboflavin, sodium molybdate, potassium iodide, sodium fluoride, cyanocobalamin, phytomenadione

*Docosahexaenoic acid (DHA) / Eicosapentaenoic acid (EPA)



**MF6™ is a unique, patented blend of six soluble and insoluble fibres (soy polysaccharide, cellulose, resistant starch, gum arabic, oligofructose and inulin) reflecting the proportions of the different fibre types in a healthy diet.

A food for special medical purposes; to be used under strict medical supervision.

For more information call the
Nutricia Clinical Care Line **1800 060 051**

NC3761-Aug18

NUTRICIA
Advanced Medical Nutrition

Tentrini Multi Fibre

Nutrition Information		Per 100ml	Per 500ml
Energy	kcal	102	510
	kJ	430	2150
Protein	g	3.3 (12.7%E)	16.5
Casein	g	1.3	6.5
Whey	g	1.9	9.5
Carbohydrate	g	12.3 (48%E)	61.5
Sugars	g	0.8	4
as Lactose	g	<0.025	<0.125
Fat	g	4.2 (37.1%E)	21
Saturates	g	0.5	2.5
Monounsaturates	g	2.4	12
Polyunsaturates	g	1.3	6.5
DHA	mg	33.9	169.5
EPA	mg	7.98	39.9
ω6 / ω3 ratio		3.8:1	3.8:1
Fibre	g	1.1 (2.2%E)	5.5
Soluble:Insoluble		50:50	50:50
Water	ml	84	420

Minerals		Per 100ml	Per 500ml
Sodium	mg	80	400
	mmol	3.5	17.5
Potassium	mg	138	690
	mmol	3.5	17.5
Calcium	mg	70	350
Phosphorus	mg	60	300
Magnesium	mg	17	85
Chloride	mg	110	550
Ca:P ratio		1.2:1	1.2:1

Vitamins		Per 100ml	Per 500ml
Vitamin A	µg-RE	61	305
Vitamin D	µg	0.7	3.5
Vitamin E	mg-α-T.E.	1.3	6.5
Vitamin K	µg	4.5	22.5
Vitamin C	mg	10	50
Thiamin	mg	0.15	0.75
Riboflavin	mg	0.16	0.8
Niacin	mg NE	1.5	7.5
Vitamin B6	mg	0.15	0.75
Vitamin B12	µg	0.24	1.2
Folic Acid	µg	21	105
Pantothenic Acid	mg	0.43	2.2
Biotin	µg	4	20

Trace Elements		Per 100ml	Per 500ml
Iron	mg	1.3	6.5
Zinc	mg	1.1	5.5
Manganese	mg	0.24	1.2
Copper	µg	110	550
Iodine	µg	12	60
Molybdenum	µg	7	35
Selenium	µg	4.9	24.5
Chromium	µg	5.1	25.5
Fluoride	mg	0.09	0.45

Other		Per 100ml	Per 500ml
Carotenoids	mg	0.15	0.75
Choline	mg	28	140
Carnitine	mg	3	15
Taurine	mg	10	50
Osmolality	mOsmol/kg H ₂ O	275	275