

Nutrini Low Energy Multi Fibre

A ready-to-use, nutritionally complete, fibre enriched, enteral tube feed for children 1-6 years (or 8-20kg)

Features

- 0.76kcal/ml
- 2.0g protein (11% E) per 100ml
- Whey dominant for improved tolerance^{1,2}
- Higher proportion of fat, lower protein and iron content compared to adult formulations
- DHA* dominant blend of long chain fatty acids to support brain function³
- 0.7g Multi Fibre (MF6[#]) mix per 100ml
- Low lactose (<0.25g/1000ml)
- Enriched with carotenoids reflecting general health recommendations for its antioxidant properties and positive health benefits⁴

Indications

For the dietary management of:

- Disease related malnutrition in children with low energy requirements aged 1-6 years (or 8-20kg)

Important Notice

- Not suitable for patients with Galactosaemia
- Not suitable for infants under 1 year of age
- Use with caution in children aged 7 years and over
- Use with caution in children with a seafood allergy
- Not suitable for children requiring a fibre free diet
- Not for parenteral use

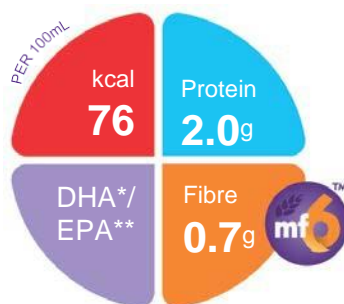
Directions for Use

- Use at room temperature
- Shake well before use
- Handle aseptically to ensure product remains sterile
- Usage to be determined by a healthcare professional
- Aseptically handled pack has a hanging time of maximum 24 hours once opened

Storage

- Store in a cool, dry place

1. Fried MD et al. J Pediatr 1992; 120(4): 569-572
2. Brun AC et al. Clin Nutr 2012; 31(1): 108-112
3. Sijben JWC et al. Clin Nutr 2012; 30(3): 273-281
4. Vaisman N et al. Clin Nutr 2006; 25: 897-905



Ordering Information

- To order contact Nutricia Customer Care 1800 889 480

Nutrini Low Energy Multi Fibre	Code	Units per carton
500ml Bottle	132188	12

Ingredients

Nutrini Low Energy Multi Fibre: water, maltodextrin, vegetable oils (rapeseed oil, sunflower oil), whey protein concentrate (from cow's **milk**), dietary fibres (**soy** polysaccharides, resistant starch, inulin, arabic gum, cellulose, oligofructose), sodium caseinate (from cow's **milk**), acidity regulator (citric acid), di potassium hydrogen phosphate, emulsifier (**soy** lecithin), **fish** oil, sodium chloride, calcium hydroxide, potassium hydroxide, sodium L-ascorbate, carotenoids (contains **soy**) (β -carotene, lutein, lycopene), choline chloride, magnesium hydroxide, sodium citrate, taurine, ferrous lactate, zinc sulphate, L-carnitine, nicotinamide, retinyl acetate, copper gluconate, DL- α tocopheryl acetate, cholecalciferol, D-biotin, sodium selenite, manganese sulphate, calcium D-pantothenate, thiamin hydrochloride, riboflavin, pyridoxine hydrochloride, potassium iodide, sodium fluoride, cyanocobalamin, chromium chloride, pteroylmonoglutamic acid, sodium molybdate, phytomenadione.

* Docosahexaenoic acid (DHA)

** Eicosapentaenoic acid (EPA)



[#]MF6 is a unique, patented blend of six soluble and insoluble fibres (soy polysaccharide, cellulose, resistant starch, gum arabic, oligofructose and inulin) reflecting the proportions of the different fibre types in a healthy diet.

A food for special medical purposes; to be used under strict medical supervision.

For more information call the
Nutricia Clinical Care Line 1800 060 051

NUTRICIA
Advanced Medical Nutrition

Nutrini Low Energy Multi Fibre

Nutrition Information		Per 100ml	Per 500ml
Energy	kcal	76	380
	kJ	320	1600
Protein	g	2 (11%E)	10
	Casein	g	0.8
	Whey	g	1.2
Carbohydrate	g	9.3 (48%E)	46.5
	Sugars	g	0.6
	as Lactose	g	<0.025
Fat	g	3.3 (39%E)	16.5
	Saturates	g	0.4
	Monounsaturates	g	1.9
	Polyunsaturates	g	1
	DHA	mg	26.6
	EPA	mg	6.26
	$\omega 6 / \omega 3$ ratio		3.8:1
Fibre	g	0.7 (2%E)	3.5
Water	ml	88	440

Minerals		Per 100ml	Per 500ml
Sodium	mg	60	300
	mmol	2.6	13
Potassium	mg	134	670
	mmol	3.4	17
Calcium	mg	60	300
Phosphorus	mg	50	250
Magnesium	mg	11	55
Chloride	mg	70	350
Ca:P ratio		1.2:1	1.2:1

Vitamins		Per 100ml	Per 500ml
Vitamin A	$\mu\text{g RE}$	41	205
Vitamin D	μg	1	5
Vitamin E	$\text{mg } \alpha\text{-T.E.}$	1.3	6.5
Vitamin K	μg	4	20
Vitamin C	mg	10	50
Thiamin	mg	0.15	0.75
Riboflavin	mg	0.16	0.8
Niacin	mg NE	1.1	5.5
Vitamin B6	mg	0.12	0.6
Vitamin B12	μg	0.27	1.4
Folic Acid	μg	15	75
Pantothenic Acid	mg	0.33	1.65
Biotin	μg	4	20

Trace Elements		Per 100ml	Per 500ml
Iron	mg	1	5
Zinc	mg	1	5
Manganese	mg	0.15	0.75
Copper	μg	90	450
Iodine	μg	10	50
Molybdenum	μg	4	20
Selenium	μg	3	15
Chromium	μg	3.5	17.5
Fluoride	mg	0.07	0.35

Other		Per 100ml	Per 500ml
Carotenoids	mg	0.1	0.5
Choline	mg	20	100
Carnitine	mg	2	10
Taurine	mg	7.5	37.5
Osmolality	$\text{mOsmol/kgH}_2\text{O}$	210	210

