

NutriniMax Energy Multi Fibre

A ready-to-use, nutritionally complete, high energy, high protein, fibre enriched enteral tube feed for children 7-12 years (or 21-45kg)

Features

- The only range of tube feeds designed to cater for the nutritional needs of older children
- Whey protein enriched for improved tolerance and protein balance
- DHA* and EPA** enriched, blend of long chain fatty acids to support brain function and prevent deficiency
- Fibre enriched, MF6 fibre blend***, 5.5g per pack (500ml), to help maintain normal bowel function
- Enriched with carotenoids reflecting general health recommendations for its antioxidant properties and positive effect on immune function

Indications

For the dietary management of:

- Disease related malnutrition in children 7-12 years (or 21-45kg)
- Children with higher energy and protein requirements
- Children with constipation or diarrhoea

Important Notice

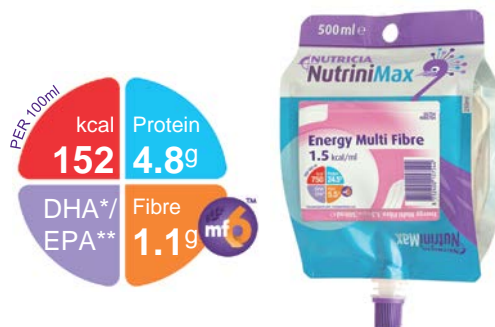
- Not suitable for patients with galactosaemia
- Not suitable for infants under 1 year of age
- Use with caution in children with a seafood allergy
- Not suitable for children requiring a fibre free diet
- Not for parenteral use

Directions for Use

- Use at room temperature
- Shake well before use
- Handle aseptically to ensure product remains sterile
- Usage to be determined by a healthcare professional

Storage

- Store in a cool, dry place
- Once opened, store in the refrigerator
- Discard unused content after 24 hours



Ordering Information

- To order contact Nutricia Customer Care 1800 889 480

NutriniMax Energy Multi Fibre	Code	Units per carton
500ml pack	40822	8

Ingredients

NutriniMax Energy Multi Fibre: Water, maltodextrin, vegetable oils (canola oil, sunflower oil), sodium caseinate (from **milk**), whey protein concentrate (from **milk**), dietary fibres (**soy** polysaccharides, resistant starch, inulin, arabic gum, cellulose, oligofructose), emulsifier (**soy** lecithin), **fish** oil, acidity regulator (citric acid), tri calcium phosphate, di potassium hydrogen phosphate, sodium chloride, potassium chloride, tri potassium citrate, choline chloride, carotenoids (contains **soy**) (β -carotene, lutein, lycopene), magnesium hydroxide, sodium L-ascorbate, calcium hydroxide, potassium hydroxide, taurine, ferrous lactate, L-carnitine, zinc sulphate, DL- α -tocopheryl acetate, nicotinamide, retinyl acetate, copper gluconate, manganese sulphate, calcium D-pantothenate, D-biotin, cholecalciferol, thiamin hydrochloride, pyridoxine hydrochloride, pteroylmonoglutamic acid, riboflavin, sodium fluoride, potassium iodide, sodium selenite, phytomenadione, chromium chloride, sodium molybdate, cyanocobalamin.

* Docosahexaenoic acid (DHA)

** Eicosapentaenoic acid (EPA)



***MF6 is a unique, patented blend of six soluble and insoluble fibres (soy polysaccharide, cellulose, resistant starch, gum arabic, oligofructose and inulin) reflecting the proportions of the different fibre types in a healthy diet.

A food for special medical purposes; to be used under strict medical supervision.

For more information call the
Nutricia Clinical Care Line 1800 060 051

NUTRICIA
Advanced Medical Nutrition

NutriniMax Energy Multi Fibre

Nutrition Information		Per 100ml	Per 500ml
Energy	kcal	152	760
	kJ	640	3200
Protein	g	4.8 (12.6%E)	24
Casein	g	2.8	14
Whey	g	1.9	9.5
Carbohydrate	g	18.5 (48.4%E)	92.5
Sugars	g	1.1	5.5
as Lactose	g	<0.025	<0.125
Fat	g	6.3 (37.5%E)	31.5
Saturates	g	0.8	4
Monounsaturates	g	3.7	18.5
Polyunsaturates	g	1.9	9.5
DHA	mg	50.9	254.5
EPA	mg	12	60
ω6 / ω3 ratio		3.8:1	3.8:1
Fibre	g	1.1 (1.5%E)	5.5
Soluble:Insoluble		50:50	50:50
Water	ml	77	385

Minerals		Per 100ml	Per 500ml
Sodium	mg	107	535
	mmol	4.7	23.5
Potassium	mg	186	930
	mmol	4.8	24
Calcium	mg	95	475
Phosphorus	mg	90	450
Magnesium	mg	26	130
Chloride	mg	147	735
Ca:P ratio		1.1:1	1.1:1

Vitamins		Per 100ml	Per 500ml
Vitamin A	μg-RE	92	460
Vitamin D	μg	1.1	5.5
Vitamin E	mg-α-T.E.	1.9	9.5
Vitamin K	μg	6.8	34
Vitamin C	mg	15	75
Thiamin	mg	0.23	1.2
Riboflavin	mg	0.24	1.2
Niacin	mg NE	2.3	11.5
Vitamin B6	mg	0.23	1.2
Vitamin B12	μg	0.3	1.5
Folic Acid	μg	32	160
Pantothenic Acid	mg	0.65	3.3
Biotin	μg	6	30

Trace Elements		Per 100ml	Per 500ml
Iron	mg	2	10
Zinc	mg	1.7	8.5
Manganese	mg	0.36	1.8
Copper	μg	162	810
Iodine	μg	17	85
Molybdenum	μg	11	55
Selenium	μg	7.4	37
Chromium	μg	7.7	38.5
Fluoride	mg	0.13	0.65



Other		Per 100ml	Per 500ml
Carotenoids	mg	0.23	1.2
Choline	mg	43	215
Carnitine	mg	4.5	22.5
Taurine	mg	15	75
Osmolality	mOsmol/kgH ₂ O	415	415