

Nutrini Peptisorb Energy

A ready-to-use, semi-elemental, high energy, nutritionally complete, enteral tube feed for children 1-10 years

Features

- High energy (1.5kcal/ml) suitable for children with high energy and/or low fluid needs
- Mixture of short chain peptides and amino acids from hydrolysed whey protein for optimal protein absorption from the gut and minimal bowel residue¹
- 100% hydrolysed whey protein for improved gastrointestinal tolerance²
- 51% of fat content from medium chain triglycerides (MCT) to enhance fat digestion and absorption in patients with malabsorption^{3,4}
- Supplemented with docosahexaenoic acid (DHA) and eicosapentaenoic acid (EPA) from fish oil
- Higher proportion of fat, lower protein and iron content compared to adult formulations to cater for the needs of young children
- Contains a small amount of prebiotic fibre to support bowel health (<2.5g per pack)

Indications

For the dietary management of:

- Disease related malnutrition in combination with severe malabsorption and/or maldigestion in children from 1 year of age (or 8-45 kg)

Important Notice

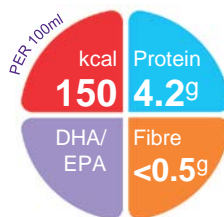
- Not suitable for patients with Galactosaemia
- Not suitable for infants under 1 year of age
- Not for parenteral use

Directions for Use

- Use at room temperature
- Shake well before use
- Handle aseptically to ensure product remains sterile
- Usage to be determined by a healthcare professional
- Aseptically handled pack has a hanging time of maximum 24 hours once opened.

Storage

- Store in a cool, dry place



Ordering Information

- To order contact Nutricia Customer Care 1800 889 480

Nutrini Peptisorb Energy	Code	Units per carton
500ml pack	111470	8

PBS Prescribing Details:

Restricted Benefit

For the dietary management of conditions involving fat malabsorption requiring a source of MCT due to:

- Liver disease
- Short gut syndrome
- Cystic fibrosis
- Gastrointestinal disorders

Population Criteria

Patient must be aged from 1-10 years inclusive

Maximum quantity of Nutrini Peptisorb Energy	PBS Code	Maximum repeats
10 x (8 x 500ml)	11110R	5

Ingredients

Nutrini Peptisorb Energy: Water, maltodextrin, vegetable oils (medium chain triglycerides (coconut and palm kernel oil), soy oil, corn oil), whey protein hydrolysate (from cow's milk), starch (corn), acidity regulator (malic acid), acidity regulator (citric acid), potassium lactate, dietary fibre (inulin, oligofructose), calcium hydrogen phosphate, fish oil, sodium chloride, magnesium hydrogen phosphate, potassium di hydrogen phosphate, choline chloride, calcium citrate, calcium chloride, taurine, inositol, beta-carotene, L-carnitine, DL- α -tocopheryl acetate, nicotinamide, ferrous lactate, calcium D-pantothenate, zinc sulphate, thiamin hydrochloride, riboflavin, pyridoxine hydrochloride, copper gluconate, retinyl acetate, sodium selenite, manganese sulphate, pteroylmonoglutamic acid, chromium chloride, potassium iodide, sodium fluoride, D-biotin, cholecalciferol, phytomenadione.

A food for special medical purposes; to be used under strict medical supervision.

For more information call the
Nutricia Clinical Care Line 1800 060 051

NC3449-Apr17

NUTRICIA
Advanced Medical Nutrition

Nutrini Peptisorb Energy

Nutrition Information		Per 100ml	Per 500ml
Energy	kcal	150	750
	kJ	630	3150
Protein	g	4.2 (11%E)	21
Casein	g	0	0
Whey	g	4.2	21
Carbohydrate	g	18.6 (49%E)	93
Sugars	g	0.4	2
as Lactose	g	0.1	0.5
Fat	g	6.6 (40%E)	33
Saturates	g	4	20
of which MCT	g	3.4	17
Monounsaturates	g	0.8	4
Polyunsaturates	g	1.8	9
- DHA	mg	53.9	270
- EPA	mg	13.8	69
ω 6 / ω 3 ratio		6.7:1	6.7:1
Fibre	g	<0.5	<2.5
Water	ml	77	385

Minerals		Per 100ml	Per 500ml
Sodium	mg	95	475
	mmol	4.1	20.5
Potassium	mg	168	840
	mmol	4.3	21.5
Calcium	mg	130	650
Phosphorus	mg	99	495
Magnesium	mg	23	115
Chloride	mg	143	715
Ca:P ratio		1.3:1	1.3:1

Vitamins		Per 100ml	Per 500ml
Vitamin A	μ g-RE	62	310
Vitamin D	μ g	1.9	9.5
Vitamin E	mg- α -T.E.	2	10
Vitamin K	μ g	6	30
Vitamin C	mg	15	75
Thiamin	mg	0.23	1.15
Riboflavin	mg	0.24	1.2
Niacin	mg NE	1.7	8.5
Vitamin B6	mg	0.18	0.9
Vitamin B12	μ g	0.26	1.3
Folic Acid	μ g	27	135
Pantothenic Acid	mg	0.5	2.5
Biotin	μ g	6	30

Trace Elements		Per 100ml	Per 500ml
Iron	mg	1.5	7.5
Zinc	mg	1.5	7.5
Manganese	mg	0.15	0.75
Copper	μ g	110	550
Iodine	μ g	15	75
Molybdenum	μ g	7	35
Selenium	μ g	4.7	23.5
Chromium	μ g	3.7	18.5
Fluoride	mg	0.1	0.5

Other		Per 100ml	Per 500ml
B-carotene	μ g	64	320
Choline	mg	38	190
L-Carnitine	mg	3	15
Taurine	mg	11	55
Osmolality	mOsmol/kgH ₂ O	510	510

1. Grimble GK et al. Clin Sci 1986; 71:65-69.
2. Fried MD et al. J Pediatr 1992; 120 (4 pt 1): 569-572.
3. Faber J et al. J Pediatr Gastroenterol Nutr 1988; 7:189-195.
4. Goulet O et al. J Pediatr Gastroenterol Nutr 2004; 38:250-269.