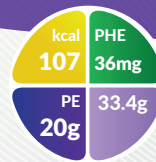




# PKU GMPPro Ultra®



## FEATURES

A nutritionally incomplete, low phenylalanine, powdered milk drink mix, containing glycomacropeptide (GMP), with essential and non-essential amino acids, vitamins, minerals and trace elements and a small amount of carbohydrate and fat.



- Modern and discreet looking packaging (33.4g sachet)



- 107Kcal per serving (20g PE).

## Ordering Information:

To order, contact Nutricia Customer Experience on **0800 688 747**

PKU Lophlex Select LQ	Presentation	Product code	Units per carton
Vanilla	33.4g sachet	172068	30 x 33.4g

## INDICATIONS

- For the dietary management of proven phenylketonuria (PKU) in children aged 3 years onwards and adults, including pregnant women (in conjunction with standard folic acid supplementation).

## PRECAUTIONS

- Must be used under medical supervision.
- Not for parenteral use
- Not suitable for children under 3 years.
- Use with caution in children aged 3 - 6 years.
- Not suitable as a sole source of nutrition.
- Not suitable for individuals with a cow's milk allergy
- PKU GMPPro ULTRA (Vanilla) should not be used as a sole source of protein but must be given in conjunction with natural protein and other nutrients to supply phenylalanine, fluid and general nutrition requirements of the patient in medically prescribed quantities. Monitor micronutrient intakes to ensure an individual's intakes are optimal.

## MIXING INSTRUCTIONS

- Wash hands. Use clean equipment to prepare feed.
- Measure the required amount of cold water into a container and add the prescribed quantity of PKU GMPPro ULTRA.
- Cover with a tight-fitting lid and shake the product until the powder has dissolved.
- PKU GMPPro ULTRA Vanilla/Lemonade is best served chilled and should be consumed immediately.

## INGREDIENTS

**Vanilla:** Casein glycomacropeptide (GMP) isolate (48.29%) (from cow's milk), L-Leucine, Sugar, L-Tyrosine, Dried glucose syrup, L-Arginine, Magnesium hydrogen phosphate, L-Histidine, Flavourings, Tricalcium phosphate, Vegetable oils (Medium chain triglycerides (Coconut and/or Palm kernel), High Oleic Sunflower oil, Rapeseed oil, Sunflower oil), L-Valine, L-Cystine, L-Tryptophan, Calcium hydrogen phosphate, Potassium chloride, Choline bitartrate, Maltodextrin, Calcium carbonate, Potassium citrate, Sodium chloride, Anticaking agent (E551), Taurine, L-Ascorbic acid, L-Carnitine, Emulsifier (E472c), Inositol, Ferrous sulphate, Sweetener (Sucralose), DL-alpha Tocopheryl acetate, Nicotinamide, Zinc oxide, Copper gluconate, Calcium D-pantothenate, Sunflower lecithin, Thiamine hydrochloride, Manganese sulphate, Pyridoxine hydrochloride, Riboflavin, Retinyl palmitate, Sodium selenite, BetaCarotene, Ascorbyl palmitate, Sodium molybdate, Potassium iodide, Chromium chloride, Folic acid, Phytomenadione, D-Biotin, Cholecalciferol, Cyanocobalamin.

## ALLERGEN & CULTURAL INFORMATION

- Contains **Milk**

## STORAGE

- Store in cool a dry place away from sunlight.
- Once opened, content should be used up immediately.

NUTRITION INFORMATION*		Per 100g	Per 33.4g	Per 100ml
Energy	KJ	1356	453	216
	Kcal	320	107	50.9
Protein equivalent	g	60	20	9.5
Carbohydrate	g	14.7	4.9	2.3
Sugars	g	7.8	2.6	1.2
As Lactose	g	0.05	0.02	0.01
Fat	g	2.2	0.73	0.35
Saturates	g	0.87	0.29	0.14
Of which MCT	g	0	0	
Monounsaturates	g	0.74	0.25	0.12
Polyunsaturates	g	0.36	0.12	0.06
Water	ml			
VITAMINS		Per 100g	Per 33.4g	Per 100ml
Vitamin A	µg-RE	551	184	87.6
Vitamin D	µg	27	9	4.3
Vitamin E	mg α-TE	18.4	6.1	2.9
Thiamin	mg	1.7	0.57	13.7
Riboflavin	mg	2.2	0.73	0.35
Niacin	mg	18	6.0	2.9
	mg NE	43	14.4	6.8
Vitamin B6	mg	2	0.67	0.32
Folic acid	µg	240	80.2	38.2
Vitamin B12	µg	4.3	1.4	0.68
Vitamin C	mg	86.4	28.9	13.7
Biotin	µg	43.2	14.4	6.9
Pantothenic acid	mg	6	2	1.0
Vitamin K	µg	86.4	28.9	13.7
MINERALS		Per 100g	Per 33.4g	Per 100ml
Sodium	mg	1006	336	160
	mmol	48.1	16.1	7.6
Potassium	mg	1571	525	250
	mmol	40.2	13.4	6.4
Calcium	mg	1442	482	229
	mmol	36	12	5.7
Phosphorous	mg	1416	473	225
	mmol	45.7	15.3	7.3
Magnesium	mg	347	116	55.2
	mmol	14.3	4.8	2.3
Chloride	mg	792	265	126
	mmol	22.3	7.4	3.5
Ca:P ratio	mg		1.1	

TRACE ELEMENTS		Per 100g	Per 33.4g	Per 100ml
Iron	mg	18	6	2.9
Zinc	mg	14	4.7	0.26
Copper	mg	1.6	0.54	2.2
Manganese	mg	1	0.33	0.16
Iodine	µg	188	62.8	29.9
Molybdenum	µg	73	24.4	11.6
Selenium	µg	73	24.4	11.6
Chromium	µg	51	17	8.1
AMINO ACID PROFILE		Per 100g	Per 33.4g	Per 100ml
L-Alanine	g	2.4	0.80	0.38
L-Arginine	g	3.0	1.0	0.48
L-Aspartic Acid	g	3.6	1.2	0.57
L-Cystine	g	1.7	0.57	0.27
L-Glutamic Acid	g	8.0	2.7	1.3
L-Glutamine	g	0.0	0.0	0.00
Glycine	g	0.42	0.14	0.07
L-Histidine	g	2.4	0.80	0.38
L-Isoleucine	g	4.4	1.5	0.70
L-Leucine	g	9.0	3.0	1.4
L-Lysine	g	2.6	0.86	0.41
L-Methionine	g	0.80	0.27	0.13
L-Phenylalanine	g	108	36.0	17.2
L-Proline	g	4.8	1.6	0.76
L-Serine	g	3.0	1.0	0.48
L-Threonine	g	6.8	2.3	1.1
L-Tryptophan	g	1.4	0.47	0.22
L-Tyrosine	g	6.0	2.0	0.95
L-Valine	g	5.2	1.7	0.83
L-Carnitine	g	0.08	0.03	0.01
Taurine	g	0.18	0.06	0.03
OTHER		Per 100g	Per 33.4g	Per 100ml
Choline	mg	360	120	57.2
Inositol	mg	71.3	23.8	11.3
Osmolality	mOsmol/kg H <sub>2</sub> O	500	Dilution: 15.9%w/v	
Osmolarity	mOsmol/l	450		

For more information call the  
**Nutricia Careline New Zealand 0800 438 500**  
[NutriciaCareline@danone.com](mailto:NutriciaCareline@danone.com)

Food for special medical purposes, for use under medical supervision.